



30A SLIP RING COLLECTOR

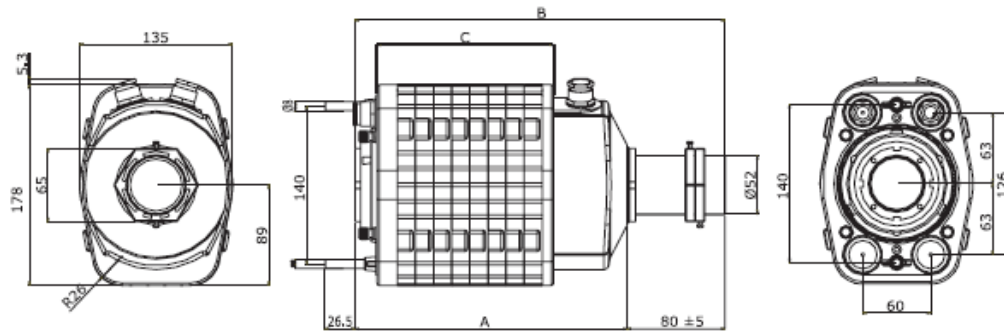
TECHNICAL SPECIFICATIONS

Conformity to Community Directives	2006/95/CE
Conformity to Standards	EN 60204-1 EN 60309-1 EN 60529
Ambient temperature	Storage -40°C/+70°C Operational -25°C/+70°C
Protection degree	IP 22
Insulation category	Class I
Cable entry	Cable clamps M25
Operating positions	Any position
Markings	CE

ELECTRICAL SPECIFICATIONS

Rated operational current	10 A - 30 A
Rated operational voltage	400 V
Rated insulation voltage	660 V
Mechanical life	Max. 3 turns/min
Connections	Screw-type terminals
Markings	CE

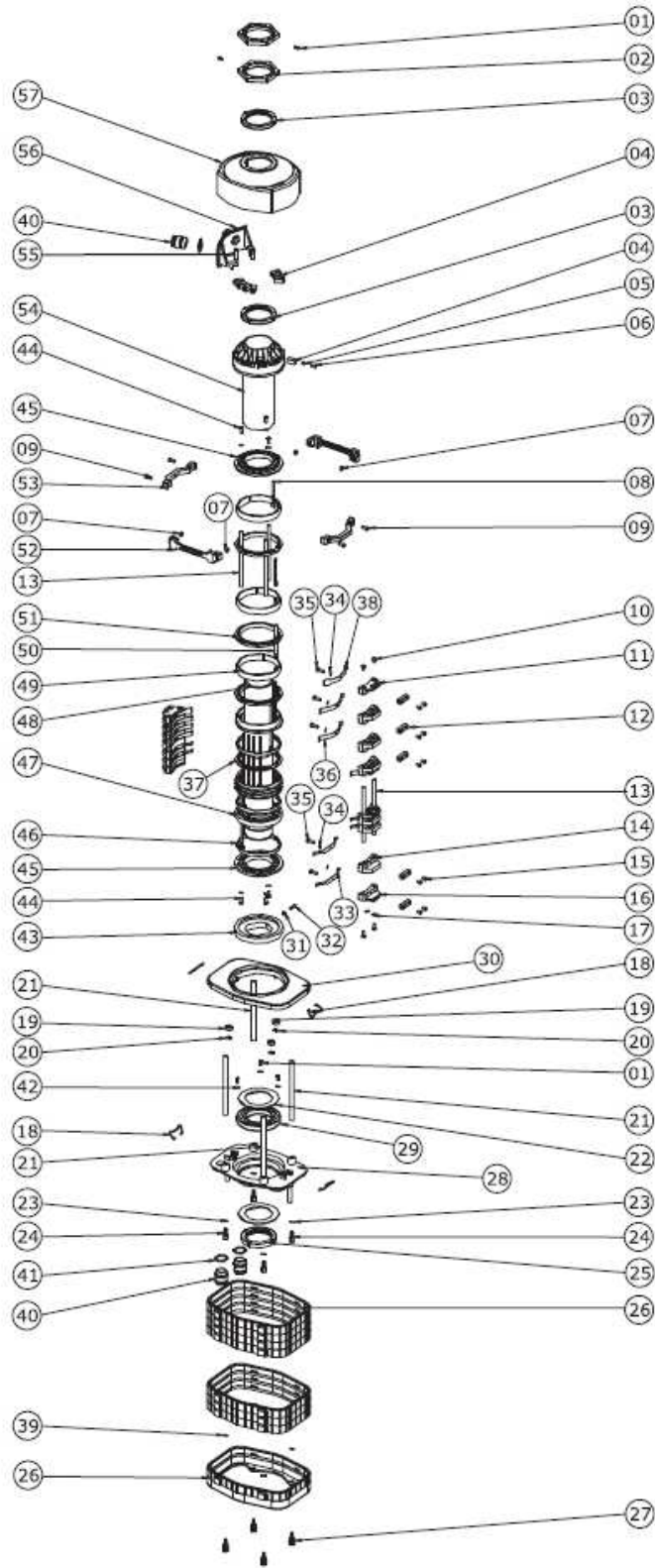
OVERALL DIMENSIONS



STANDARD CODES AND DIMENSIONS

No. 10A rings	No. 30A rings	Code	Dimensions (mm)			No. 30A rings	Code	Dimensions (mm)		
			A	B	C			A	B	C
1	4	PF2305B001	195	265	108	3	PF2303B001	179	249	92
2	4	PF2306B003	211	281	124	4	PF2304B001	195	265	108
3	4	PF2307B002	211	281	124	5	PF2305B002	211	281	124
4	4	PF2308B001	227	297	140	6	PF2306B002	227	297	140
5	4	PF2309B001	227	297	140	7	PF2307B001	243	313	156
6	4	PF2310B001	243	313	156	8	PF2308B003	259	329	172
7	4	PF2311B001	243	313	156	9	PF2309B002	275	345	188
8	4	PF2312B001	259	329	172	10	PF2310B003	291	361	204
9	4	PF2313B002	259	329	172	11	PF2311B002	307	377	220
10	4	PF2314B001	275	345	188	12	PF2312B002	323	393	326
11	4	PF2315B002	275	345	188	13	PF2313B003	339	409	252
12	4	PF2316B001	291	261	204	14	PF2314B003	355	425	268
Max. No. of rings: 40						15	PF2315B005	371	441	284
						16	PF2316B004	387	457	300
						Max. No. of rings: 20				

DETAILED DRAWING



30A SLIP RING COLLECTOR



30A SLIP RING COLLECTOR

COMPONENTS

REFERENCE	CODE	DESCRIPTION
01	PRVI0033PE	Screw 3x7.5
02	PRFU6052PE	Nut
03	PRFU6042PE	Nut - pitch 1.5
04	PRT06207PE	Terminal
05	PRVI1004PE	Screw M4x4
06	PRVI0136PE	Screw M4x6
07	PRDA6005PE	Nut
08	Ask for codes	Rod
09	PRVI0106PE	Screw 4x10
10	PRVI0146PE	Screw M4x12
11	PRSL9155PI	Hexagonal seat short brush holder
12	PRT06206PE	Line brush terminal
13	PRT00486PE	Brush holder rotor rod
14	PRSL9110PI	Standard brush holder
15	PRVO6016PI	Screw M4x6
16	PRSL9160PI	Screw seat short brush holder
17	PRRN6005PE	Washer
18	PRMO0032PE	Brush holder spring-hook
19	PRSL8555PI	Guide pin
20	PRVV9990PE	Elastic ring
21	Ask for codes	Protection rod
22	PRSL8542PI	Bearing covering ring 50A
23	PRRN1061PE	Toothed washer
24	PRT06201PE	Screw
25	PRFU6032PE	Nut - pitch 1
26	PRSL5110PI	Sector
27	PRT06167PE	Knob
28	PRFU3101PE	Lower plate
29	PRCB0011PE	Ball bearing
30	PRFU3111PE	Upper plate
31	PRDA0023PE	Nut
32	PRVV1007PE	Elastic pin
33	PRTR4061PE	Auxiliary brush
34	PRRN1032PE	Washer
35	PRVI6031PE	Screw M4x12
36	PRTR4058PE	Line brush
37	PRSL8565PI	Spacer 2mm
38	PRTR4062PE	Earth brush
39	PRRN9002PE	Washer
40	PRVV490013	Cable clamp PG16
41	PRVV490014	Cable clamp gasket
42	PRRN0044PE	Washer
43	PRSL9010PI	Plaque
44	PRVI0176PE	Screw M4x10
45	PRSL8560PI	Earth rotor sector
46	PRFU6001PE	Auxiliary ring

COMPONENTS

REFERENCE	CODE	DESCRIPTION
47	PRSL8575PI	Spacer 10mm
48	Richiedere i codici	Tube
49	PRFU6011PE	Line ring
50	PRTO6436PE	Rod 72.5
51	PRSL8570PI	Spacer 4mm
52	PRSL9175PI	Lower brush holder
53	PRSL9170PI	Upper brush holder
54	Richiedere i codici	Internal protection tube
55	PRVI0126PE	Screw 4x20
56	PRSL9060PI	Cable clamp support
57	PRSL5665PI	1 hole cover

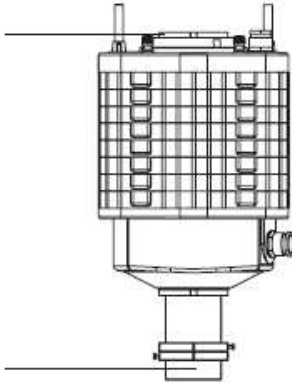
REQUEST FORM FOR NON STANDARD SLIP RING COLLECTORS

RINGS

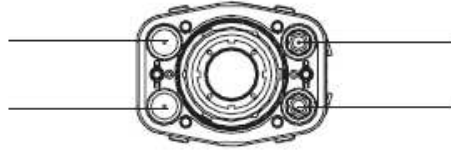
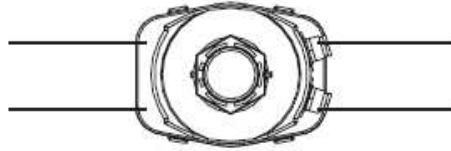
No. of 10A rings _____

No. of 30 A rings _____

TUBE LENGTH



CABLE CLAMPS



INSTRUCTIONS

- Write the number of **10A and 30 A rings** required.
- Write the input and output length of the **tube** required, when different from the length showed in the Overall Dimensions.
- Write the number and type of **cable clamps** required on the upper cover and on the lower plate.

REMARKS



Emekyemez Mah.Yüksek Minare Sk. No:8 / 17
80020 Karaköy / İstanbul
Tel:212/2359535
Fax:212/2359537

30A SLIP RING COLLECTOR